

Your Partner in Health



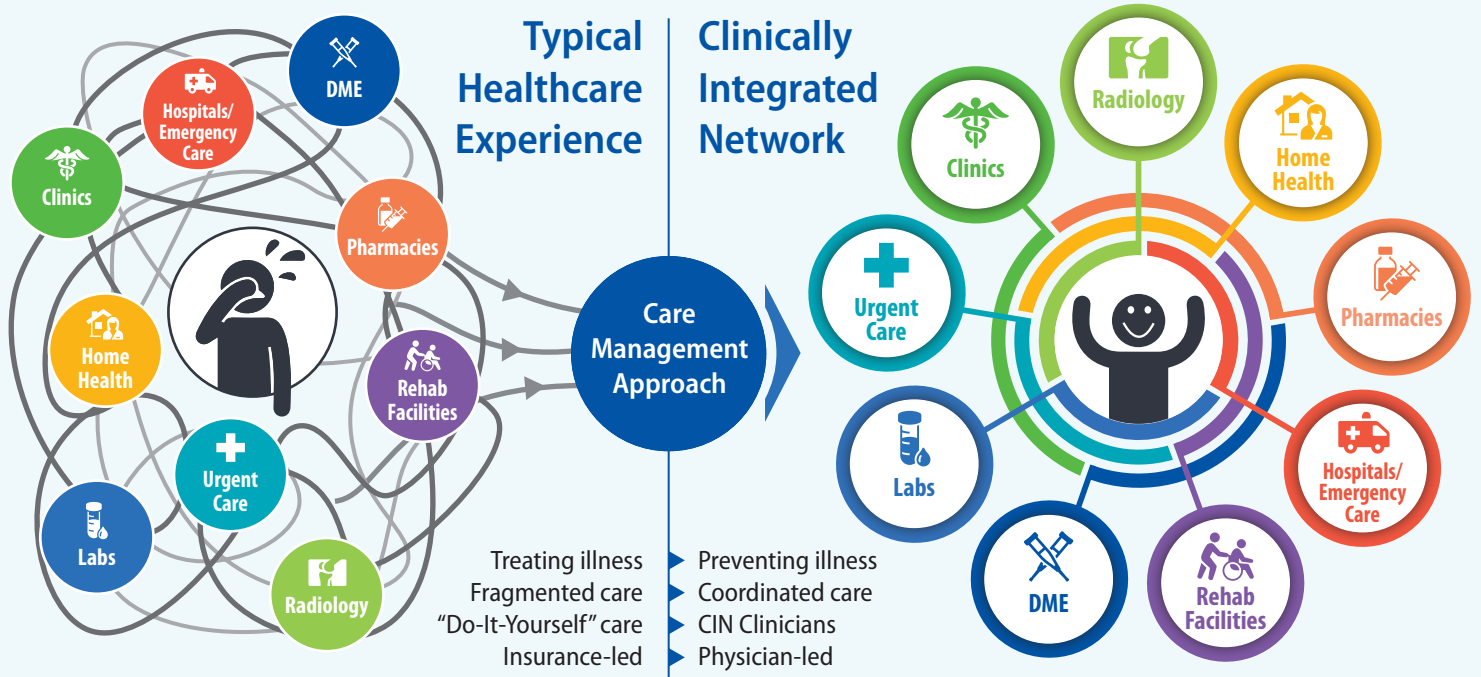
Right Care, Right Time, Right Place.

CHI Saint Joseph Health Partners is a physician-led clinically integrated network in Kentucky established in 2012. Saint Joseph Health Partners is uniquely positioned to make a real difference in the health of the people of Kentucky.

We are leading the way in value-based care, which measures, reports and rewards excellence in health care delivery, and recognizes the long-term solutions to disease management by understanding and managing the social determinants of health.

Who We Are At a Glance

- Most advanced Clinically Integrated Network in Kentucky
- Provider-led
- Multidisciplinary care management approach
- All payor
- Independent and employed providers



Care Management Approach

RN Quality Care Coordinator

- Gaps in Care
- Quality Metrics
- Medical Group Partnership

Clinical Pharmacist

- Medication Adherence
- Medical Plan RX Spend
- Clinical Medication Consultation

SW Ambulatory Care Coordinator

- Social Determinates of Health
- Community Resources
- Skilled Facility Follow up

Certified Medical Assistant

- Annual Wellness
- Preventative Screenings
- Facility Discharge Follow up

RN Ambulatory Care Coordinator

- Population Health
- Disease Management
- Facility Discharge Follow up

Why Choose CHI Saint Joseph Health Partners?

We seek to implement advance data analytics to connect all available wellness resources for a more organized, individualized medical care experience.

1 COLLECTING DATA

By analyzing health data, we're able to stratify risk and create a customized solution for each organization.

2 CREATING INDIVIDUALIZED PLANS

By focusing on those who incur the highest amount of medical cost and addressing those who are at risk for developing more serious health complication we utilize our skilled and diverse care management team to make a difference for each population.

3 IMPLEMENTING HOLISTIC MODELS OF HEALTH CARE

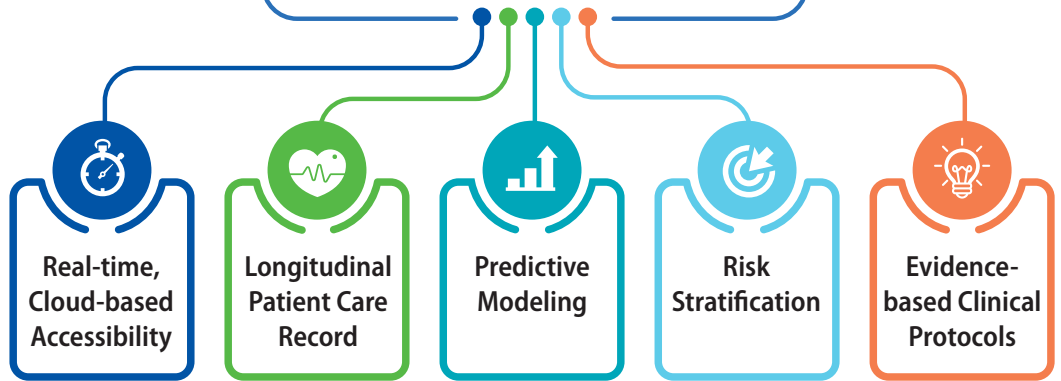
Our solutions, designed for a person-centered approach, encourage a 1:1 relationship between care coordinators and the individual. This holistic model integrates an individual's health, medication management, nutrition, exercise and stress reduction which may affect the ability to improve and sustain better health.

Advanced Data Collection

Our integrated approach improves outcomes and reduces healthcare costs by:

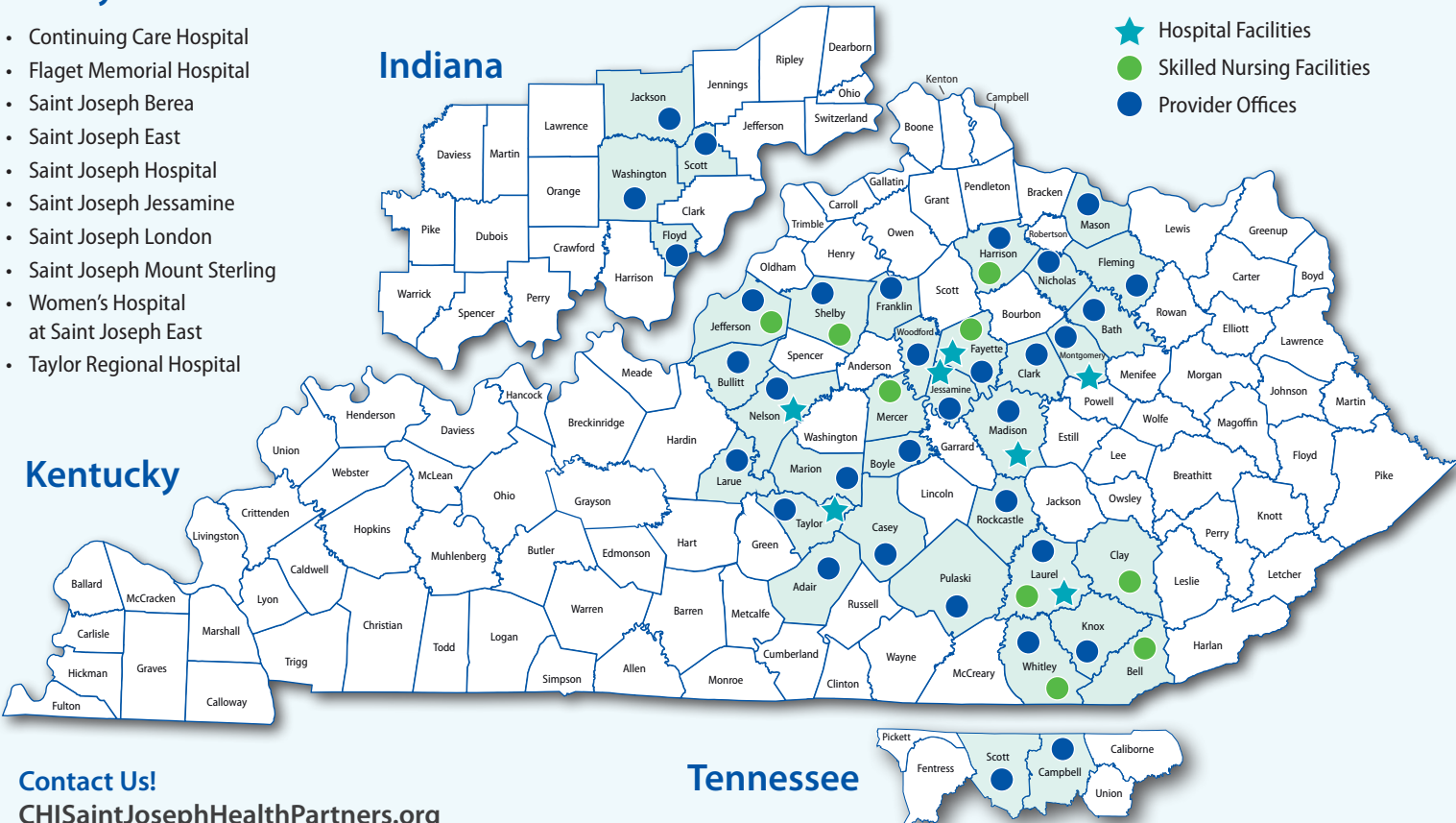
- Determining and monitoring high-risk populations
- Encouraging adherence to treatment plans
- Providing patient education
- Preventing further complications

ANALYTICS Information Technology



Facility and Practice Locations

- Continuing Care Hospital
- Flaget Memorial Hospital
- Saint Joseph Berea
- Saint Joseph East
- Saint Joseph Hospital
- Saint Joseph Jessamine
- Saint Joseph London
- Saint Joseph Mount Sterling
- Women's Hospital at Saint Joseph East
- Taylor Regional Hospital



Contact Us!

CHISaintJosephHealthPartners.org
833.716.0885